

OCTOBER 2017

NOTE:

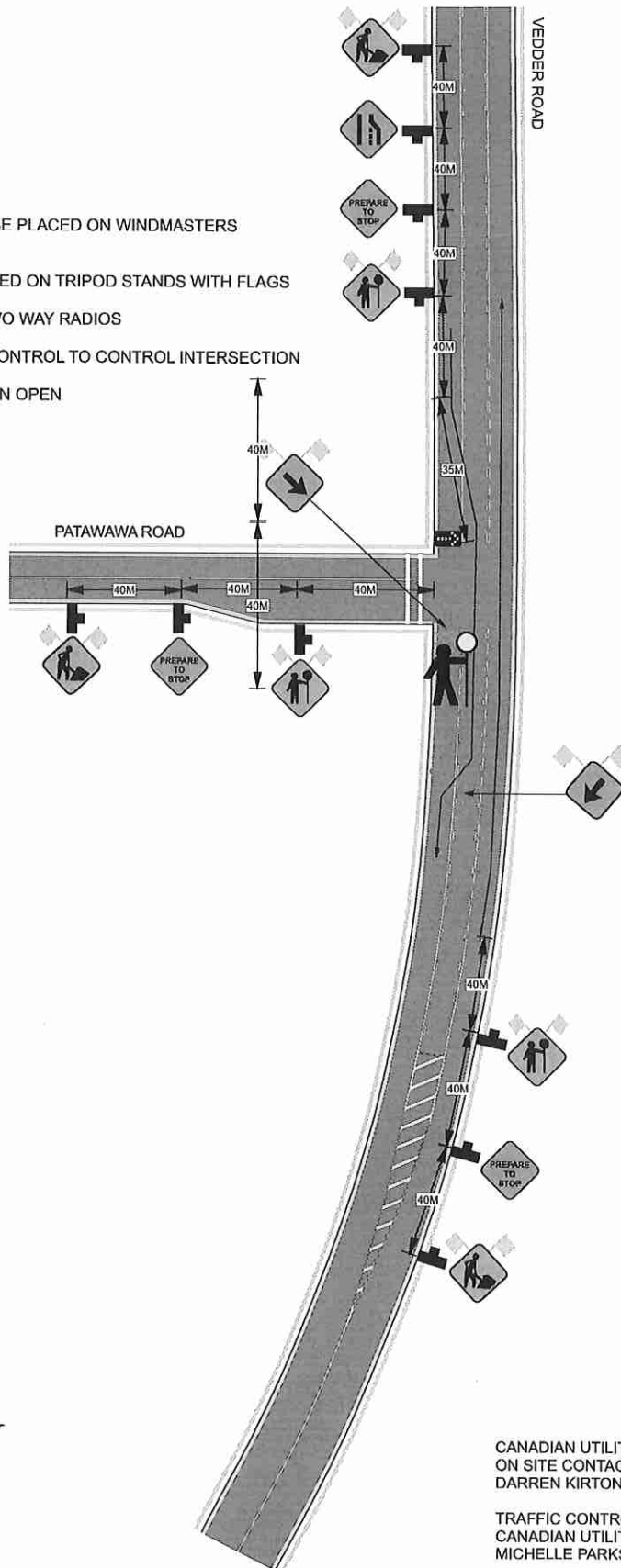
ALL SIGNS ON VEDDER MOUNTAIN ROAD WILL BE PLACED ON WINDMASTERS WITH FLAGS

ALL SIGNS ON ALL SIDE STREETS WILL BE PLACED ON TRIPOD STANDS WITH FLAGS

TRAFFIC CONTROL WILL BE EQUIPPED WITH TWO WAY RADIOS

LIGHTS OUT IN THE INTERSECTION - TRAFFIC CONTROL TO CONTROL INTERSECTION

ALL SIDEWALKS AND CROSSWALKS WILL REMAIN OPEN



LEGEND

- DIRECTION TRAFFIC FLOW →
- TUBULAR MARKERS ······
- WORK AREA [hatched box]
- SIGN STANDS [T-shaped symbol]
- TRAFFIC CONTROLLER [stick figure]
- BUS STOP [rectangle]

CANADIAN UTILITY CONSTRUCTION
 ON SITE CONTACT
 DARREN KIRTON 604-968-1700

TRAFFIC CONTROL WILL BE PROVIDED BY
 CANADIAN UTILITY CONSTRUCTION
 MICHELLE PARKS 604-313-5796